



FIVE NIGHTS IN KENYA SPECIAL

TWO NIGHTS OL PEJETA BUSH CAMP AND THREE NIGHTS REKERO. FROM: US\$4,990*

*Per person sharing in a double tent (single supplements will apply). Includes local flights and transfers from Nairobi. Valid for travel within the next six weeks.

Asilia

GENUINE SAFARIS | GENUINE DIFFERENCE

YOUR ROUTE



KENYA

OL PEJETA BUSH CAMP | DAY 1 & 2

OL PEJETA CONSERVANCY



▲ Mt. Kenya

KENYA

Olkiombo airstrip ✈

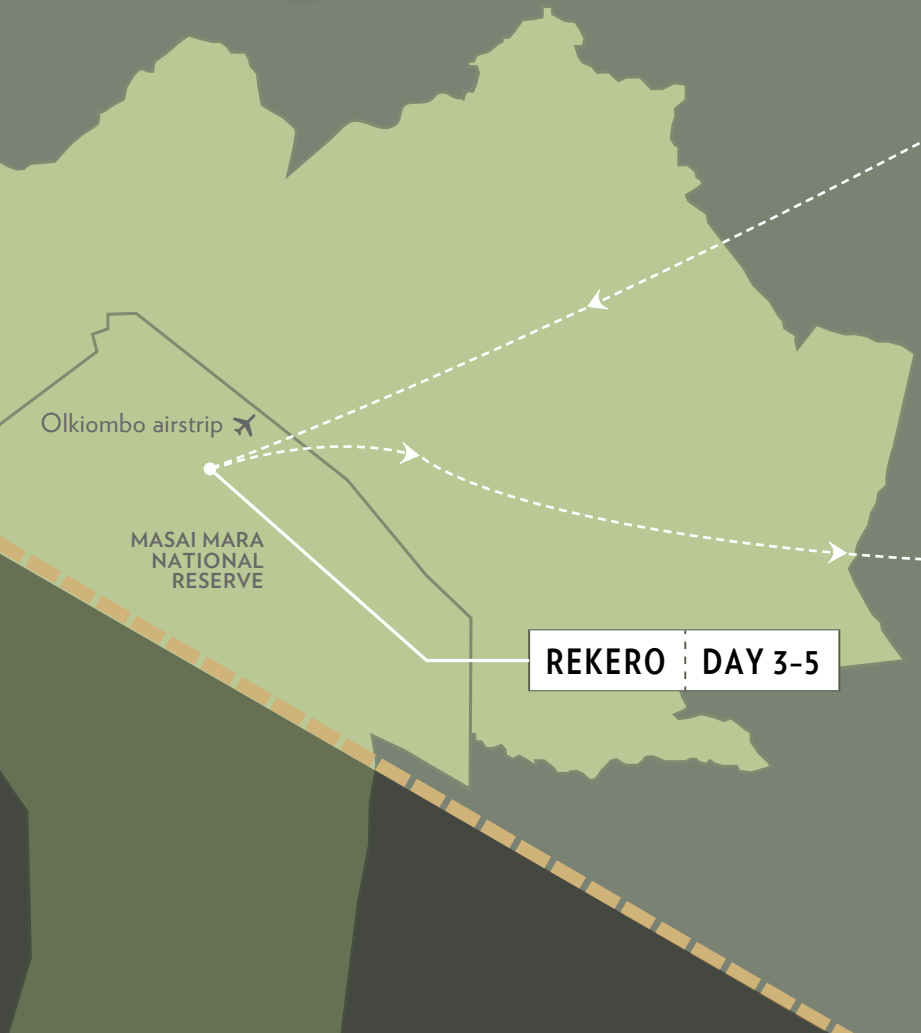
MASAI MARA NATIONAL RESERVE

REKERO | DAY 3-5

END **NAIROBI**

✈ WILSON AIRPORT ✈ JOMO KENYATTA INTERNATIONAL AIRPORT

DEPART WILSON AIRSTRIP | DAY 1



WHAT TO EXPECT ON YOUR SAFARI

OI Pejeta Bush Camp: Day 1 - 2

OI Pejeta Bush Camp embodies an authentic East African experience. It is located on the banks of the Ewaso Ngiro River and blends seamlessly into the surrounding plains. With only seven tents, the camp offers an intimate safari experience. Each tent has its own private veranda, which provides the perfect spot for watching the animals come and go along the riverbank.

During your stay at OI Pejeta Bush Camp, you will be spoilt for choice with all the activities available. Choose between visiting the Endangered Species Enclosure or horse riding with rhino or venturing out on foot to explore the beauty of the conservancy. Game drives with your knowledgeable guide are a great way to explore the conservancy — extend your time in the bush by enjoying a packed lunch in the plains prepared by the OI Pejeta chef, or head back to camp for a sit-down meal. If you choose to relax during the heat of the afternoon, you can take a night drive before returning to camp for a late dinner.



OL PEJETA BUSH CAMP, OL PEJETA CONSERVANCY

OPEN: Year-round

Closest airstrip: Kamok Nanyuki (60-min drive)

 7 tents (including 1 family tent)

 Wi-Fi

TENT DETAILS

Classic canvas safari tent

Private veranda

BATHROOM DETAILS

En suite bathroom with safari
bucket shower

ACTIVITIES (included)

Game drives

Night drives

ACTIVITIES (additional cost)

- Canine Anti-Poaching Unit visit
- Cultural and Community visits
- Cycling Safaris
- Endangered Species Enclosure - northern white rhinos
- Gym in the wild
- Horse riding in the Conservancy
- Horse riding with rhinos
- Junior Ranger Programme
- Lion tracking
- Nanyuki Market Day
- Running with the rangers
- Wildlife - Livestock Integration
- Walking safaris



WHY CHOOSE OL PEJETA BUSH CAMP?

Comfortable and traditional east African tented camp

Superb focus on pioneering conservation initiatives

Big 5 sightings alongside the last two northern white rhino in the world

Emphasis on fantastic guiding and personal service

Experience game drives in Asilia's first electric vehicle (please note that there is only one)



Rekero: Day 3 - 5

Situated 150 metres away from a crossing point on the Talek River, Rekero is the perfect place to view the Great Migration in the Masai Mara. The camp evokes the charm of African safaris from a bygone era with nine romantic tents and spectacular views of the surrounding game-filled plains. You can enjoy morning, afternoon, or full-day game drives, led by your expert guide. Return to camp to have lunch *à la carte* under the trees or for an extended game drive take a delicious packed lunch with you to enjoy out in the bush — either way the food has been carefully prepared for you by your chef. Rekero offers a photographic vehicle for photograph enthusiasts and professionals alike, and safari balloon rides can be organised from camp to see the Great Migration from a different perspective.



REKERO, MASAI MARA

OPEN: June to April

Closest airstrip: Ol Kiombo (20-min drive)

 9 tents (including 2 family tents)

 Wi-Fi

TENT DETAILS

Classic canvas safari tent

Private veranda with
view onto river

BATHROOM DETAILS

En suite bathroom with
double vanity and indoor
shower

ACTIVITIES (included)

Game drives

ACTIVITIES (additional cost)

Balloon safaris

Cultural visits (1.5 - 2 hrs away)



WHY CHOOSE REKERO?

Superb year-round game viewing with highly knowledgeable guides.

Cultural visits to nearby communities.

Unparalleled views of the Great Migration crossing point in front of camp.

Close to the Mara River for easy access to other crossing points.





COVID-19 IN CAMP PROTOCOLS

In addition to the already stringent safety protocols we have in place, we are insisting that you wear a face mask whenever social distancing is not possible. This includes the time that you are inside your close-sided safari vehicle because you are travelling as part of a mixed group in an enclosed space. Please be respectful of your fellow travellers, as they may feel uncomfortable if you are not all wearing face masks when you are together.

[Please click here for information](#) on the stringent protocols we have put in place in all of our camps to ensure the safety of our guests and staff.

POSITIVE IMPACT

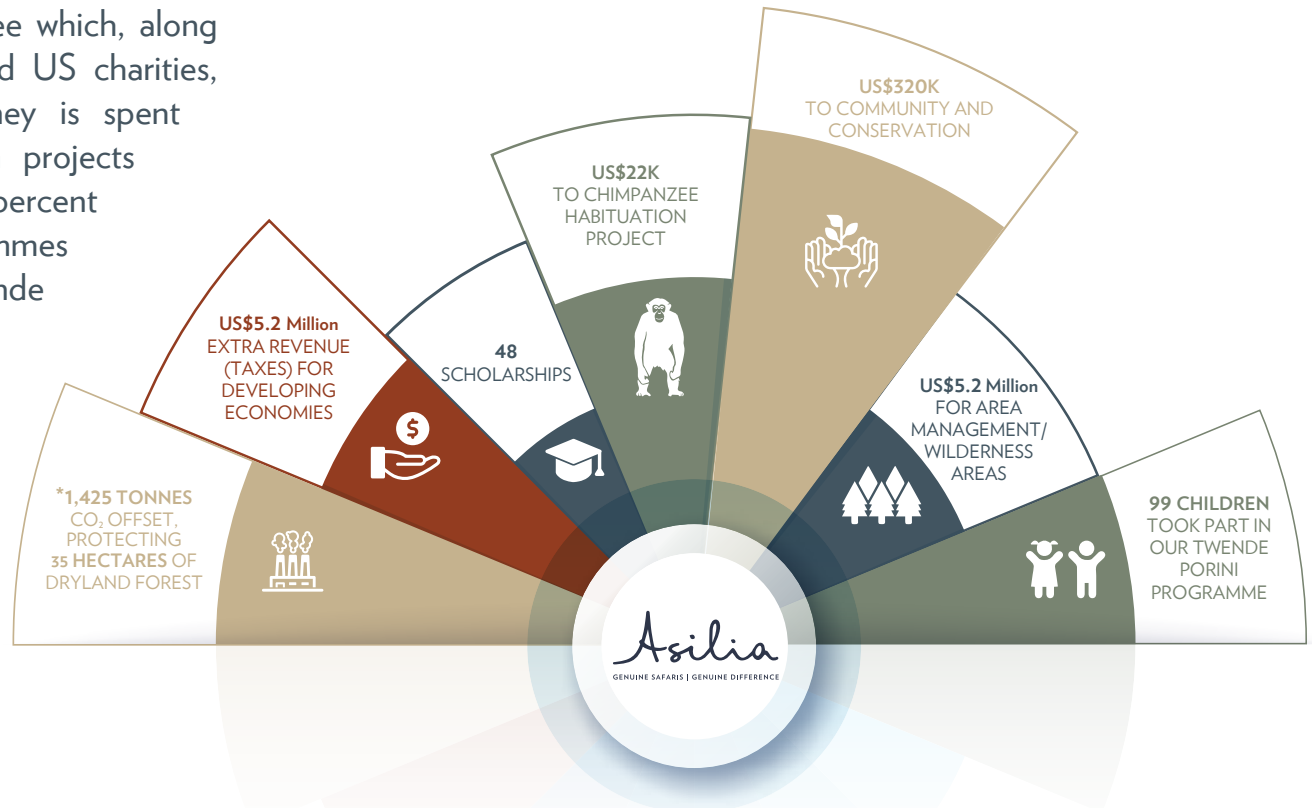


By making bold, and often pioneering, investments into areas that are ecologically and economically vulnerable, we aim to turn these areas into viable conservation economies, benefitting both the local communities as well as the environment.

In 2015 Asilia implemented a U\$5 pppn conservation fee which, along with kind donations through Asilia Giving, our UK and US charities, amounts to roughly U\$300,000 per year. This money is spent equally on community development and conservation projects throughout Kenya and Tanzania. We ensure that 100 percent of these contributions are donated to our partner programmes as well as our own home-grown projects such as Twende Porini and hospitality scholarships.

Along with this crucial funding, Asilia prides itself by operating an eco-friendly, sustainable safari operation. In every instance, we choose the responsible course of action; for example, installing camp solar systems, investing in staff training, eradicating plastic and off-setting carbon emissions. We are recognised for our endeavours by respected external intuitions such as Global Impact Investment Rating System, Fair Trade Tourism, Responsible Tanzania Tourism

and Ecotourism Kenya. During the trip you will learn more about our Positive Impact programmes but feel free to ask your camp managers and staff during your safari stay.



REKERO



OL PEJETA BUSH CAMP

