

A large herd of wildebeest is crossing a river, with many animals wading through the water and others on the banks. The scene is captured in a wide shot, showing the scale of the migration. A green rectangular box is overlaid on the top center of the image, containing the Asilia logo and tagline. Another green rectangular box is overlaid in the center of the image, containing the main title text.

Asilia

GENUINE SAFARIS | GENUINE DIFFERENCE

FIVE NIGHTS IN TANZANIA  
OR KENYA SPECIAL



## TANZANIA

TWO NIGHTS DUNIA AND  
THREE NIGHTS OLAKIRA  
MIGRATION CAMP.

**FROM: US\$5,592\***

\*Per person sharing in a double tent (single supplements will apply). Includes local flights and transfers from Kilimanjaro International Airport near Arusha. Valid for travel within the next six weeks.

[VIEW THE TRIP](#)



## KENYA

TWO NIGHTS OL PEJETA  
BUSH CAMP AND THREE  
NIGHTS REKERO.

**FROM: US\$4,990\***

\*Per person sharing in a double tent (single supplements will apply). Includes local flights and transfers from Nairobi. Valid for travel within the next six weeks.

[VIEW THE TRIP](#)



# YOUR ROUTE



OLAKIRA MIGRATION CAMP DAY 3 - 5

Kogatende airstrip

LAKE VICTORIA

SERENGETI NATIONAL PARK

Seronera airstrip

DUNIA DAY 1 & 2

NGORONGORO CONSERVATION AREA

Ngorongoro Crater

TANZANIA

END ARUSHA

START KILIMANJARO INTERNATIONAL AIRPORT

DEPART KILIMANJARO INTERNATIONAL AIRPORT DAY 1

TARANGIRE NATIONAL PARK



TANZANIA

# WHAT TO EXPECT ON YOUR SAFARI

## Dunia: Day 1 - 2

Located on a major migration corridor in a spectacular location in the heart of the Serengeti, Dunia offers easy access to the scenic Moru Kopjes and game-rich Seronera region, plentiful in big cats, rhino, and Super Prides of lion. Dunia's eight spacious tents overlook the Serengeti National Park's vast golden plains. Kick back on your private seated verandah with a chilled G&T and enjoy the peace and stillness. Opt to start your day soaring over the plains in a hot-air balloon and end it dining under the stars in the bush. Our hospitable staff will do everything to ensure your comfort. Enjoy the kitchen's daily spoils from the comfort of the newly renovated lounge and dining area with viewing deck or take a picnic made just for you out for an extended game drive. Dunia is the only camp in Africa run entirely by women and the team is an inspirational example of what women can achieve in a male-dominated industry.



## DUNIA, SERENGETI

**OPEN:** Year-round

Closest airstrip: Seronera (45-minute drive)

 8 tents (including 1 family tent)

 Wi-Fi (service is variable)

### TENT DETAILS

Classic canvas safari tent

Raised on decks with private veranda

### BATHROOM DETAILS

En suite bathroom with  
indoor shower

### ACTIVITIES (included)

Game drives

### ACTIVITIES (additional cost)

Hot-air balloon safaris

Photographic vehicle



## WHY CHOOSE DUNIA?

The only camp in the Serengeti run by a team of only women – becoming a beacon for women's empowerment.

Located in a quiet, exclusive valley in the heart of the Serengeti.

Easy access to 3 key areas: Seronera, southern Serengeti, and the Moru Kopjes.

Exceptional resident game, including rhino and leopard.






## Olakira Migration Camp: Day 3 - 5

Known for its superb locations during the Great Migration, Olakira Migration Camp spends June and November in the north of the Serengeti to witness the epic wildebeest crossing of the Mara River. Here, guests can watch thousands of wildebeest take a leap of faith into the water, facing hungry Nile crocodile and cantankerous hippo. When the herds are on the move, the air is full of grunting, thudding hooves and billowing dust. Olakira Migration Camp boasts nine beautiful stargazing tents with 270-degree views from your bed — the mesh-covered tents offer safety allowing guests to sleep under a sky of glittering stars. In the day, the beds are rolled away by your housekeeper, turning the space into your own private viewing deck with lounge, allowing you to hear and watch the wildebeest herds move past camp up towards the Masai Mara for the epic river crossings. You can enjoy breakfasts out in the bush among the plains game, or back at camp where freshly baked breads, fruit juice and cooked meals await. In the evenings, sit around the campfire and share in the excitement of the days' sightings, and enjoy dinner under the comfort of the canvas dining tent or under the milky way.



## OLAKIRA MIGRATION CAMP, SERENGETI

**OPEN:** June to November  
Closest airstrip: Kogatende (20 min drive)

-  9 stargazing tents (including 1 family tent)
-  Wi-Fi (service is variable)
-  Mobile tented camp

### TENT DETAILS

Private veranda within the 270-degree stargazing deck  
Mosquito net

### BATHROOM DETAILS

En suite bathroom with double vanity and indoor shower

### ACTIVITIES (included)

Game drives

### ACTIVITIES (additional cost)

Hot-air balloon safaris  
Cultural visits (northern camp only)  
Photographic Vehicle (northern camp only)



## WHY CHOOSE OLAKIRA MIGRATION CAMP?

Experience a night under the stars with our specially designed stargazing tents.  
River crossings only minutes away from camp.  
Opportunities for hot-air balloon safaris.





## COVID-19 IN CAMP PROTOCOLS

In addition to the already stringent safety protocols we have in place, we are insisting that you wear a face mask whenever social distancing is not possible. This includes the time that you are inside your close-sided safari vehicle because you are travelling as part of a mixed group in an enclosed space. Please be respectful of your fellow travellers, as they may feel uncomfortable if you are not all wearing face masks when you are together.

[Please click here for information](#) on the stringent protocols we have put in place in all of our camps to ensure the safety of our guests and staff.



## POSITIVE IMPACT

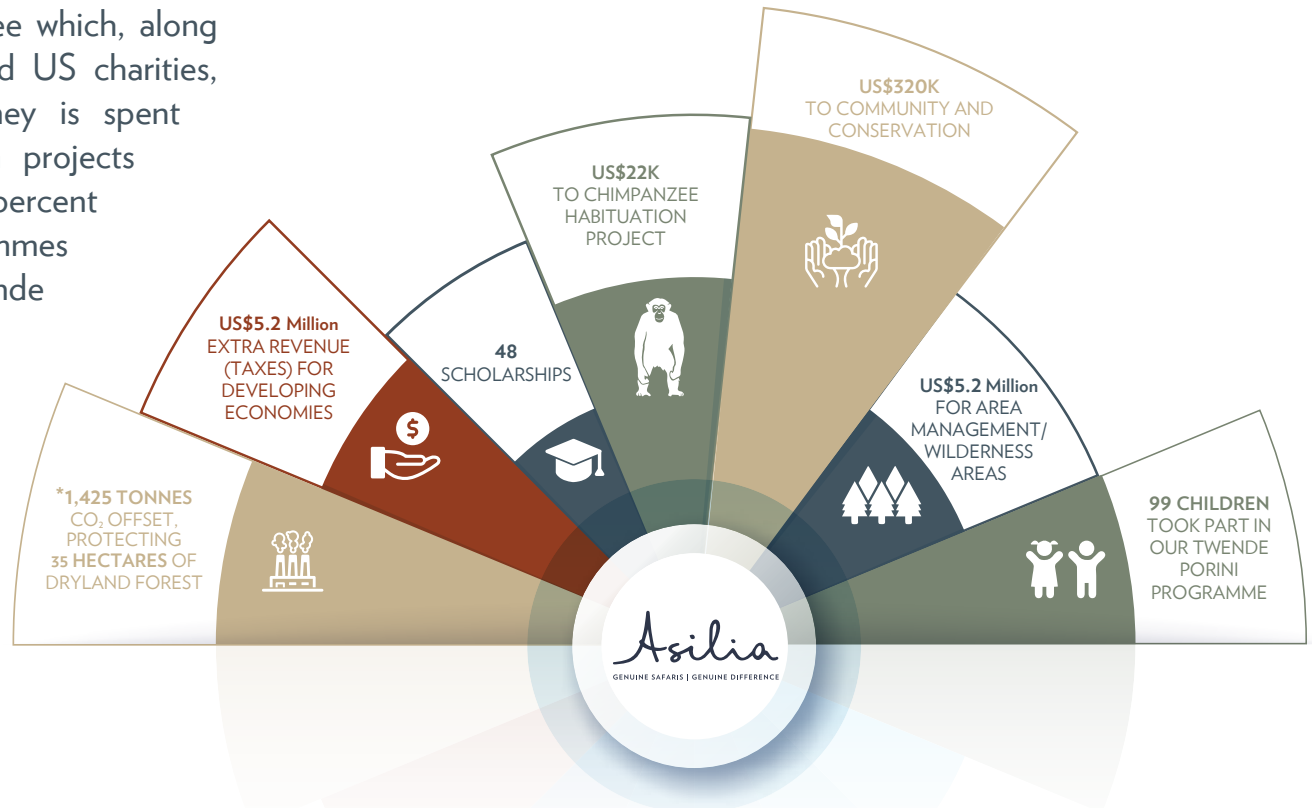


By making bold, and often pioneering, investments into areas that are ecologically and economically vulnerable, we aim to turn these areas into viable conservation economies, benefitting both the local communities as well as the environment.

In 2015 Asilia implemented a U\$5 pppn conservation fee which, along with kind donations through Asilia Giving, our UK and US charities, amounts to roughly U\$300,000 per year. This money is spent equally on community development and conservation projects throughout Kenya and Tanzania. We ensure that 100 percent of these contributions are donated to our partner programmes as well as our own home-grown projects such as Twende Porini and hospitality scholarships.

Along with this crucial funding, Asilia prides itself by operating an eco-friendly, sustainable safari operation. In every instance, we choose the responsible course of action; for example, installing camp solar systems, investing in staff training, eradicating plastic and off-setting carbon emissions. We are recognised for our endeavours by respected external intuitions such as Global Impact Investment Rating System, Fair Trade Tourism, Responsible Tanzania Tourism

and Ecotourism Kenya. During the trip you will learn more about our Positive Impact programmes but feel free to ask your camp managers and staff during your safari stay.



DUNIA



OLAKIRA MIGRATION CAMP



# YOUR ROUTE



KENYA

**OL PEJETA BUSH CAMP** | **DAY 1 & 2**

**OL PEJETA CONSERVANCY**



▲ Mt. Kenya

KENYA

Olkiombo airstrip ✈

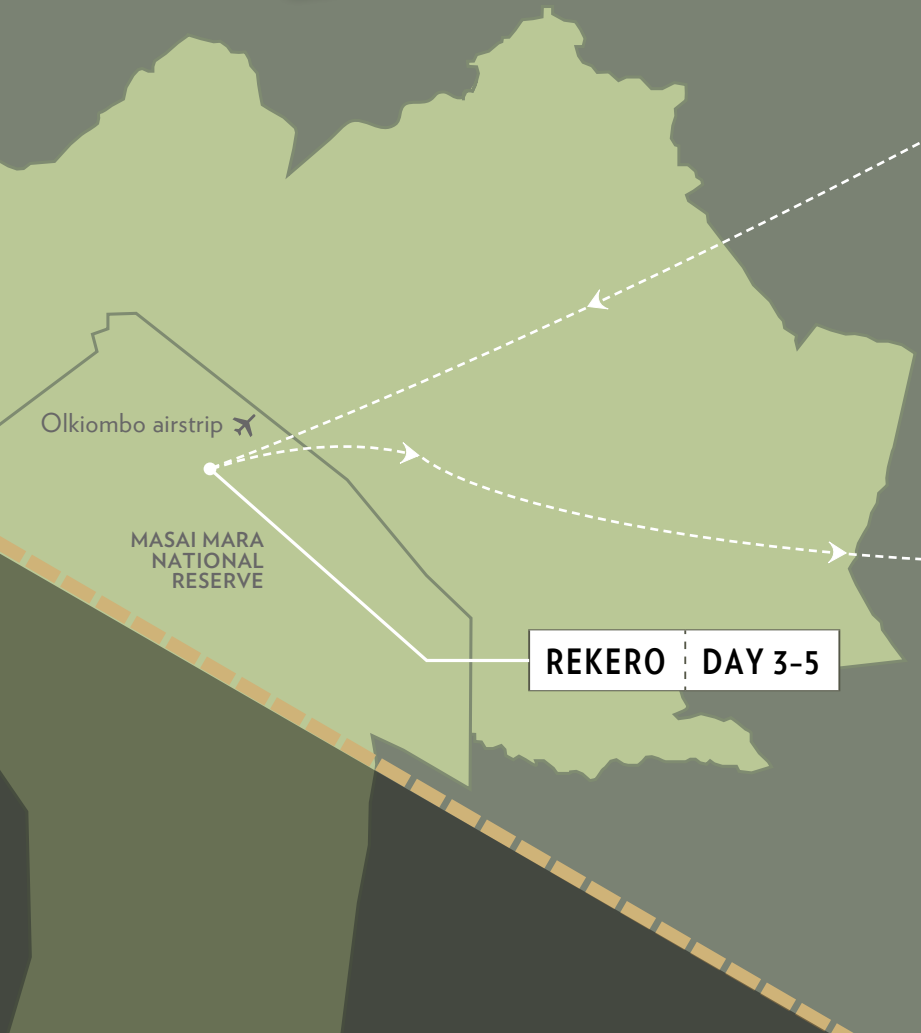
MASAI MARA NATIONAL RESERVE

**REKERO** | **DAY 3-5**

END **NAIROBI**

✈ WILSON AIRPORT ✈ JOMO KENYATTA INTERNATIONAL AIRPORT

**DEPART WILSON AIRSTRIP** | **DAY 1**



# WHAT TO EXPECT ON YOUR SAFARI

## OI Pejeta Bush Camp: Day 1 - 2

OI Pejeta Bush Camp embodies an authentic East African experience. It is located on the banks of the Ewaso Ngiro River and blends seamlessly into the surrounding plains. With only seven tents, the camp offers an intimate safari experience. Each tent has its own private veranda, which provides the perfect spot for watching the animals come and go along the riverbank.

During your stay at OI Pejeta Bush Camp, you will be spoilt for choice with all the activities available. Choose between visiting the Endangered Species Enclosure or horse riding with rhino or venturing out on foot to explore the beauty of the conservancy. Game drives with your knowledgeable guide are a great way to explore the conservancy — extend your time in the bush by enjoying a packed lunch in the plains prepared by the OI Pejeta chef, or head back to camp for a sit-down meal. If you choose to relax during the heat of the afternoon, you can take a night drive before returning to camp for a late dinner.



## OL PEJETA BUSH CAMP, OL PEJETA CONSERVANCY

**OPEN:** Year-round

Closest airstrip: Kamok Nanyuki (60-min drive)

 7 tents (including 1 family tent)

 Wi-Fi

### TENT DETAILS

Classic canvas safari tent

Private veranda

### BATHROOM DETAILS

En suite bathroom with safari  
bucket shower

### ACTIVITIES (included)

Game drives

Night drives

### ACTIVITIES (additional cost)

- Canine Anti-Poaching Unit visit
- Cultural and Community visits
- Cycling Safaris
- Endangered Species Enclosure - northern white rhinos
- Gym in the wild
- Horse riding in the Conservancy
- Horse riding with rhinos
- Junior Ranger Programme
- Lion tracking
- Nanyuki Market Day
- Running with the rangers
- Wildlife - Livestock Integration
- Walking safaris



## WHY CHOOSE OL PEJETA BUSH CAMP?

Comfortable and traditional east African tented camp

Superb focus on pioneering conservation initiatives

Big 5 sightings alongside the last two northern white rhino in the world

Emphasis on fantastic guiding and personal service

Experience game drives in Asilia's first electric vehicle (please note that there is only one)



## Rekero: Day 3 - 5

Situated 150 metres away from a crossing point on the Talek River, Rekero is the perfect place to view the Great Migration in the Masai Mara. The camp evokes the charm of African safaris from a bygone era with nine romantic tents and spectacular views of the surrounding game-filled plains. You can enjoy morning, afternoon, or full-day game drives, led by your expert guide. Return to camp to have lunch *al carte* under the trees or for an extended game drive take a delicious packed lunch with you to enjoy out in the bush — either way the food has been carefully prepared for you by your chef. Rekero offers a photographic vehicle for photograph enthusiasts and professionals alike, and safari balloon rides can be organised from camp to see the Great Migration from a different perspective.



## REKERO, MASAI MARA

**OPEN:** June to April

Closest airstrip: Ol Kiombo (20-min drive)

 9 tents (including 2 family tents)

 Wi-Fi

### TENT DETAILS

Classic canvas safari tent

Private veranda with  
view onto river

### BATHROOM DETAILS

En suite bathroom with  
double vanity and indoor  
shower

### ACTIVITIES (included)

Game drives

### ACTIVITIES (additional cost)

Balloon safaris

Cultural visits (1.5 - 2 hrs away)



## WHY CHOOSE REKERO?

Superb year-round game viewing with highly knowledgeable guides.

Cultural visits to nearby communities.

Unparalleled views of the Great Migration crossing point in front of camp.

Close to the Mara River for easy access to other crossing points.





## COVID-19 IN CAMP PROTOCOLS

In addition to the already stringent safety protocols we have in place, we are insisting that you wear a face mask whenever social distancing is not possible. This includes the time that you are inside your close-sided safari vehicle because you are travelling as part of a mixed group in an enclosed space. Please be respectful of your fellow travellers, as they may feel uncomfortable if you are not all wearing face masks when you are together.

[Please click here for information](#) on the stringent protocols we have put in place in all of our camps to ensure the safety of our guests and staff.



## POSITIVE IMPACT

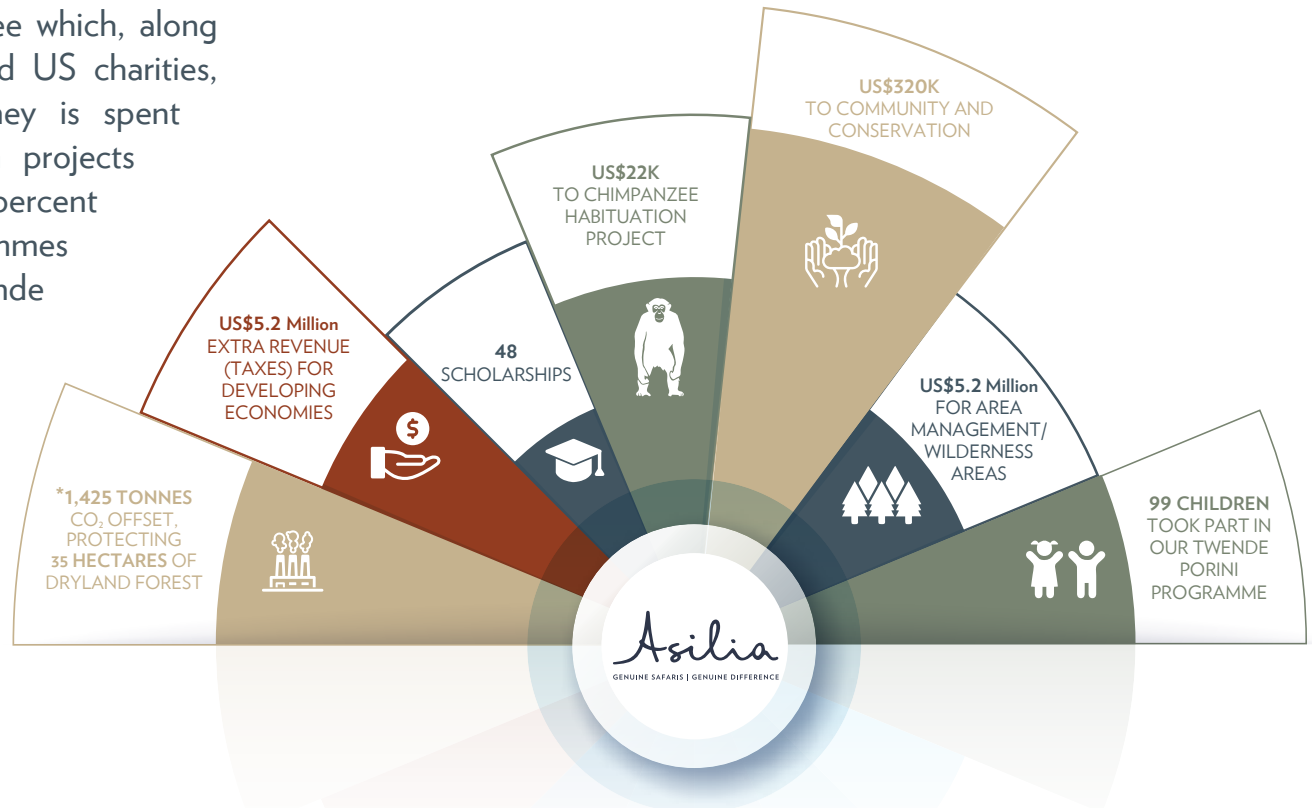


By making bold, and often pioneering, investments into areas that are ecologically and economically vulnerable, we aim to turn these areas into viable conservation economies, benefitting both the local communities as well as the environment.

In 2015 Asilia implemented a U\$5 pppn conservation fee which, along with kind donations through Asilia Giving, our UK and US charities, amounts to roughly U\$300,000 per year. This money is spent equally on community development and conservation projects throughout Kenya and Tanzania. We ensure that 100 percent of these contributions are donated to our partner programmes as well as our own home-grown projects such as Twende Porini and hospitality scholarships.

Along with this crucial funding, Asilia prides itself by operating an eco-friendly, sustainable safari operation. In every instance, we choose the responsible course of action; for example, installing camp solar systems, investing in staff training, eradicating plastic and off-setting carbon emissions. We are recognised for our endeavours by respected external intuitions such as Global Impact Investment Rating System, Fair Trade Tourism, Responsible Tanzania Tourism

and Ecotourism Kenya. During the trip you will learn more about our Positive Impact programmes but feel free to ask your camp managers and staff during your safari stay.



REKERO



OL PEJETA BUSH CAMP

