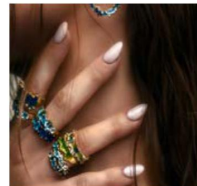


# UPSCALE

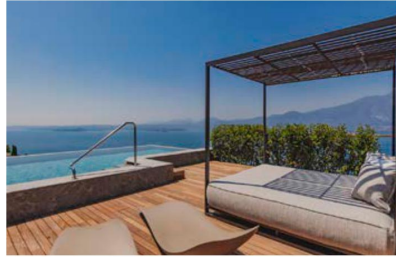
MARCH/APRIL 2024

# *Living*

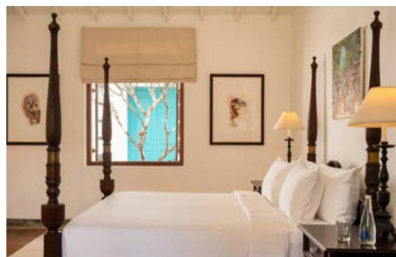
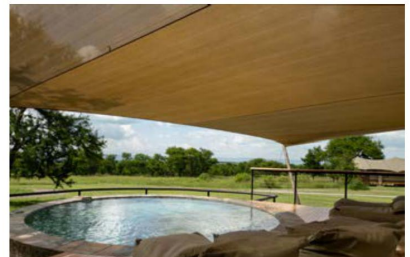


EXPERIENCE THE DIFFERENCE  
[www.upscalelivingmag.com](http://www.upscalelivingmag.com)

# WHAT'S NEW



“Bringing you the finest places around the world is what we love to do here at Upscale Living magazine. In keeping with this tradition, we are focusing on introducing you to new kids on the block or accommodation establishments with a re-looked lease on life. Grab your travel diary as you want to get to these places as soon as possible!”



| BY HELÉNE RAMACKERS



NAMIRI

## THE RETREATS AT SAYARI & NAMIRI

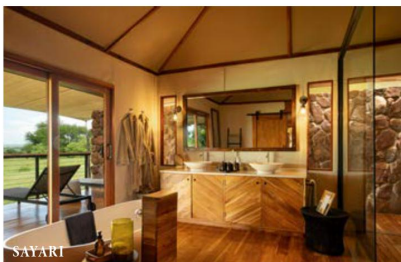
### SERENGETI, TANZANIA



NAMIRI



SAYARI



SAYARI

The perfect locations for multigenerational and small group travel, The Retreats at Sayari and Namiri come complete with a private guide and vehicle, host and dedicated chef who prepares special kids meals, both offering exceptional service from Asilia's most experienced staff.

Sayari Retreats, open June to March, and Namiri Plains Retreats, opened year round, offer a separate pool and lounge, and spacious deck with sunken fire pit from which to enjoy expansive views across these iconic Serengeti locations, and an additional dining room for larger groups. At Sayari, walking safaris, hot air balloon safaris and cultural visits can all be enjoyed, and guests are in the premier location to view thousands of wildebeest crash across the Mara River as part of their Great Migration from July to November.

Each property has two en-

suite double bedrooms and additional beds can be added for children over five. Sayari is renowned for its exquisite safari experience amidst the untouched plains of the northern Serengeti. Namiri Plains sits in the eastern corner of the Serengeti offering unparalleled privacy as no other camps are within an hour's drive. Before Namiri Plains was built, these grasslands were closed for 20 years to allow the cheetah population to restore.

Staying at Namiri Plains allows phenomenal access to the densest big cat viewing in the Serengeti. Game drives, walking safaris and cheetah research can all be done here, and each group will have a private guide and safari vehicle allowing for flexibility and exclusivity in the experience.

Renowned for being a role model in sustainable tourism and operating on a carbon-neutral basis, Asilia

Africa offers an authentic East African safari experience that leaves a positive impact on Africa's wilderness. The Asilia philosophy focuses not only on the luxurious extras of the accommodation, but also on the safari experience, the quality of guiding, personalized service, and fine food.

No two Asilia properties feel the same, yet each operates on a small scale and endeavors to deliver a sense of freedom through game drives and where possible walking safaris in beautiful wilderness areas.

[www.asiliaafrica.com](http://www.asiliaafrica.com)